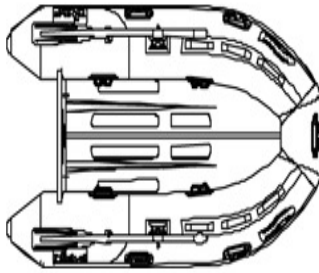


Ribeye - TL 280

£ 1,500

📍 United Kingdom



TL 280

Boat Only Weight:	35kg
Length:	2.74m
People:	4
Max Power:	8hp

Technical specification

Overall Length	2.74m
Internal Length	1.89m
Overall Width	1.50m
Internal Width	0.85m
Tube Diameter	38cm
Number of Air Chambers	2
Maximum Payload	450kg
Boat Only Weight	35kg
Maximum Power	8hp
Engine Shaft	5
Design Category	C
Maximum Engine Weight	37kg



MRM Yacht Agents

<http://www.mrm-maritime.me/>

+38616003101

- Rib Tenders
- 2.8 m/9 ft

"Super light & strong aluminium hull purpose built for davits makes this the perfect tender - Ideally suited for beaching roles & long term tender use" ribeye.co.uk

This is a Brand new, never been used tender, still in packaging. RRP of £1966 - These are old stock from a small Ribeye Dealer in Montenegro

Grab yourself a real Bargain before the summer, whether it is as a tender for your sailing yacht - comes with 3 davit lift points and tow eye, or as a little fun boat for inshore waters.

Ribeye are a leading manufacturer of Ribs and you will not be disappointed in this little but amazing tender!

Shipping worldwide can be arranged.

To see this ad online, go to boatshop24.co.uk and search for **BCU60987B8**